

## ***Bardarbunga volcano hat***

---



**LOPI**

## ONE SIZE

### MATERIAL:

**Léttlopi – 50g**

1 black and 1 red ball

3½mm and 4½mm dpns or 40 cm circular needle

Moss stitch

1<sup>st</sup> rnd: k1, p1

2<sup>nd</sup> rnd: k in p sts and p in k sts

Cable cast-on (used in top decoration)

Start with a slip knot. Knit into slip knot, leaving the stitch on the left needle. Place the new stitch onto left needle, by slipping it knit-wise. \*Knit into gap between last two stitches on left needle. Place knitted stitch onto left needle by slipping it knit-wise. Repeat from \*

## HAT

Cast on 84 sts using 3½mm needles. Join into a circle and work moss stitch for 5 cm. Change to 4½mm needles and continue working moss stitch until hat measures 7.5 cm from cast-on edge. End with 2<sup>nd</sup> rnd in moss stitch (begins with p sts). Work chart and decrease as indicated.

### Top dekoration:

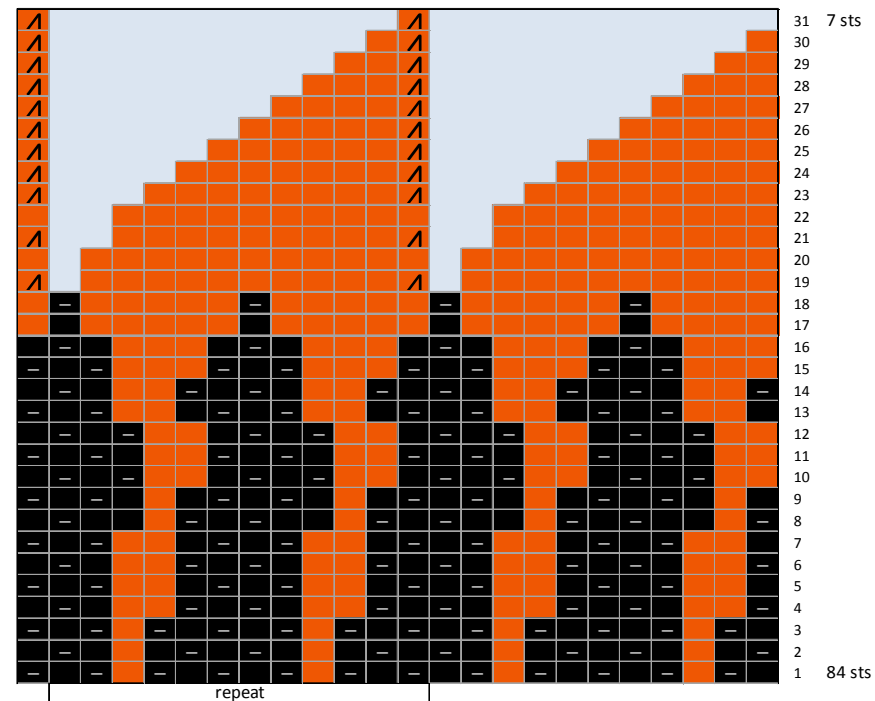
The decoration is knitted in each of the 7 remaining sts.

Begin on first sts. Cast-on 15 sts using the Cable cast-on method. Bind off and leave the last sts on a scrap yarn. Repeat in each of remaining sts. Break the yarn and pull through the remaining sts (on scrap yarn).

### Montering

Weave in loose ends. Rinse by hand in lukewarm water and lay flat to dry.

### CHART



KEY  
■ = knit  
■ = purl  
▲ = k2tog  
□ = no sts



Design: Hulda Hákonardóttir