



LOPI

Neon





SIZES	S	(M)	(L)	
Chest:	100	(108)	(117)	cm
	39.5	(45.5)	(46)	in
Length to underarm:	42	(44)	(45)	cm
	16.5	(17.5)	(18)	in
Sleeve length to underarm:	49	(50)	(51)	cm
	19	(19.5)	(20)	in

NEON

MATERIALS

Álafosslopi – 100 gr balls

A	1233	space blue	5 (5 5)
B	7624	neon green	2 (3 3)

5mm (US 8) circular needles 40 og 80 cm

6½mm (US 10½) circular needles 40 og 80 cm

5mm and 6½mm dp needles

GAUGE

12 sts and 18 rows = 10 x 10 cm (4 in) measured over St st using 6½mm needles. Check gauge and adjust needle size if necessary.

NOTE

Body and sleeves are worked in the round from lower edge to underarms, then joined to work the yoke in the round. Round begins at left side of body. On yoke, round begins on left side of back where body joins sleeve.

BODY

Cast on 120 (130, 140) sts with col A using 5mm circular needle. Join into circle and work rib; *k1, p1*, for total of 3-4 cm. Change to 6½mm needles and knit until body measures approx 27 (29, 30) cm from cast on edge. Work **chart 1**. Body should now measure approx 42 (44, 45) cm. Do not work the last 4 (5, 5) sts in rnd. Set aside and work sleeves.

SLEEVES

Cast on 34 (34, 36) sts with col A using 5mm dpns. Join into circle and work rib; *k1, p1*, for total of 3-4 cm. Change to 6½mm needles and inc 2 (4, 4) sts evenly over first round => 36 (38, 40) sts. Then inc 2 sts (1 st after first st and 1 st before las st in rnd) in every 6th rnd, 5 (5, 5) times up sleeve => 46 (48, 50) sts. When sleeve measures approx 34 (35, 36) cm work chart 1 and take care to cont inc. When chart is finished, sleeve should measure approx 49 (50, 51) cm. Place 8 (9, 10) sts unerarm on a st holder => 38 (39, 40) sts.

YOKE

Join body and sleeves using 6½mm needle and take care to knit first row in **chart 2** when joining the pieces. Place 8 (9, 10) sts on st holder (last 4 (5, 5) sts and the first 4 (4, 5) sts). K38 (39, 40) sts from first sleeve, k52 (56, 60) sts from body (front), place next 8 (9, 10) sts on st holder. K38 (39, 40) sts from second sleeve. K52 (56, 60) sts from body (back) => 180 (190, 200) sts. Finish chart and dec as indicated. Change to shorter circular needle when necessary. When chart is is complete 72 (76, 80) sts remain.

NECKBAND

Change to 5mm needles and cont with col B. K1 rnd and dec 8 (10, 12) sts evenly over rnd => 64 (66, 68) sts. Work rib; *k1, p1*, for total of 3-4 cm. Bind off loosely.

FINISHING

Graft underarm sts tog. Weave in loose ends. Rinse sweater by hand in lukewarm water. Carefully lay flat to dry and smooth gently into right shape and measurements.

Design: *bórunn Vilmarsdóttir*

KEY

- = A 1233
- = B 7624
- ▲ = k2tog
- = no st
- = repeat

CHART 1

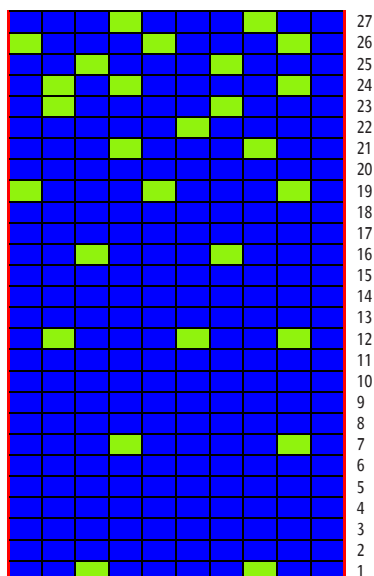


CHART 2

