

## Penguins

|                            |    |     |    |    |     |     |
|----------------------------|----|-----|----|----|-----|-----|
| <b>SIZES:</b>              | 2  | (4  | 6  | 8  | 10) | yrs |
| Chest:                     | 64 | (69 | 73 | 78 | 87) | cm  |
| Length to underarm:        | 23 | (26 | 30 | 34 | 37) | cm  |
| Sleeve length to underarm: | 24 | (27 | 30 | 34 | 37) | cm  |

### MATERIALS

#### Léttlopi – 50 gr balls

|                            |   |    |   |   |    |
|----------------------------|---|----|---|---|----|
| A – 1411 sun yellow        | 3 | (4 | 4 | 5 | 6) |
| B – 0056 light ash heather | 1 | (1 | 1 | 1 | 1) |
| C – 0051 white             | 1 | (1 | 2 | 2 | 2) |
| D – 0059 black             | 1 | (1 | 1 | 1 | 1) |



4½ mm (US 7) circular needles 40 and 60-80 cm  
 3½ mm (US 4) circular needles 40 and 60-80 cm  
 3½ mm (US 4) and 4½ (US 7) mm double pointed needles

### GAUGE

18 sts and 24 rows = 10 x 10 cm measured over St st using 4½ mm (US 7) needles. Check gauge and adjust needle size if necessary.

### NOTE

Body and sleeves are worked in the round from lower edge to underarms, then joined to work yoke in the round. Round begins at left side of body. On yoke, round begins on the left side of back at the joining of body and sleeve.

### BODY

Cast on 114 (126, 132, 144, 156) sts with A using 3½ mm (US 4) circular needle. Join in a circle and work \*k1, p1\* rib for 4 (4, 4, 5, 5) cm. Change to 4½ mm (US 7) circular needle and work patt from **chart 1** in St st. When patt is complete cont with A until body measures 23 (26, 30, 34, 37) cm from cast on edge. Don't knit last 3 (4, 4, 5, 5) sts in last row. Set aside and work sleeves.

### SLEEVES

Cast on 30 (32, 34, 36, 42) sts with A using 3½ mm (US 4) dpns. Join in a circle and work \*k1, p1\* rib for 4 (4, 4, 5, 5) cm. Change to 4½ mm (US 7) dpns and work patt from **chart 1** in St st (patt stitch repeat is not complete in sizes 4 and 6). When patt is complete cont with A and inc 1 st after first st and 1 st before last st of rnd, in every 6<sup>th</sup> (6<sup>th</sup>, 6<sup>th</sup>, 7<sup>th</sup>, 8<sup>th</sup>) rnd, total 7 (8, 9, 9, 10) times => 44 (48, 52, 54, 62) sts. Work until sleeve measure 24 (28, 30, 34, 37) cm from cast on edge. Place 5 (8, 8, 9, 10) sts underarm on st holder => 39 (40, 44, 45, 52) sts. Work second sleeve.

## YOKE

Join body and sleeves as follows: With 4½ mm (US 7) circular needle using A, place the last 3 (4, 4, 5, 5) sts and the first 3 (3, 4, 4, 5) sts of body on st holder for underarm (total 6 (7, 8, 9, 10) sts). K first sleeve 39 (40, 44, 45, 52) sts. K 51 (56, 58, 63, 68) sts for front, place next 6 (7, 8, 9, 10) sts on st holder for underarm. K second sleeve 39 (40, 44, 45, 52) sts. K 51 (56, 58, 63, 68) sts for back => 180 (192, 204, 216, 240) L. Work patt and dec's from **chart 2**. Change to shorter circular needle when necessary. When chart is complete => 60 (64, 68, 72, 80) sts.

## NECKBAND

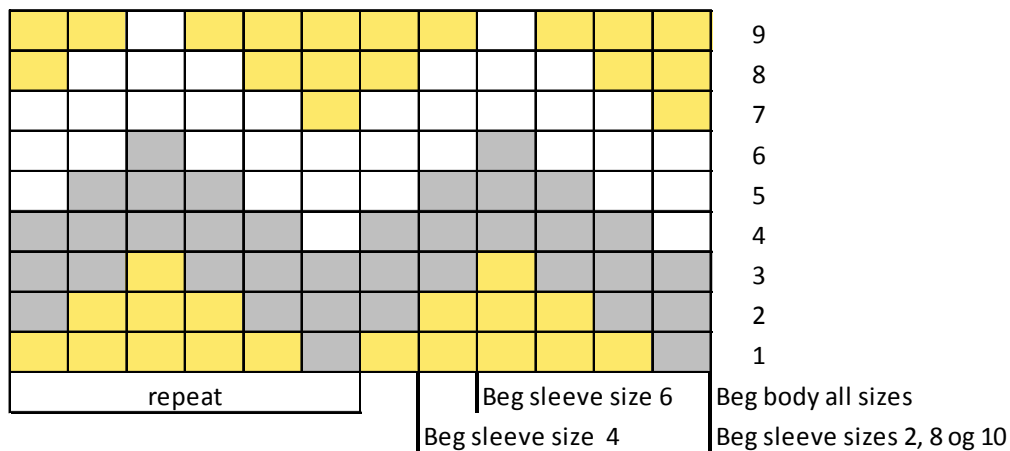
Change to 3½ mm (US 4) needle and cont using color A. K 1 rnd St st. Work \*k1, p1\* rib for 6 (6, 6, 7, 8) cm. Bind off loosely.

## FINISHING




Graft underarm sts tog and weave in loose ends. Fold neckband in half to inside and slip stitch in place. Rinse sweater by hand in lukewarm water and lay flat to dry in right measurements.

*Design: Linda Konráðsdóttir*

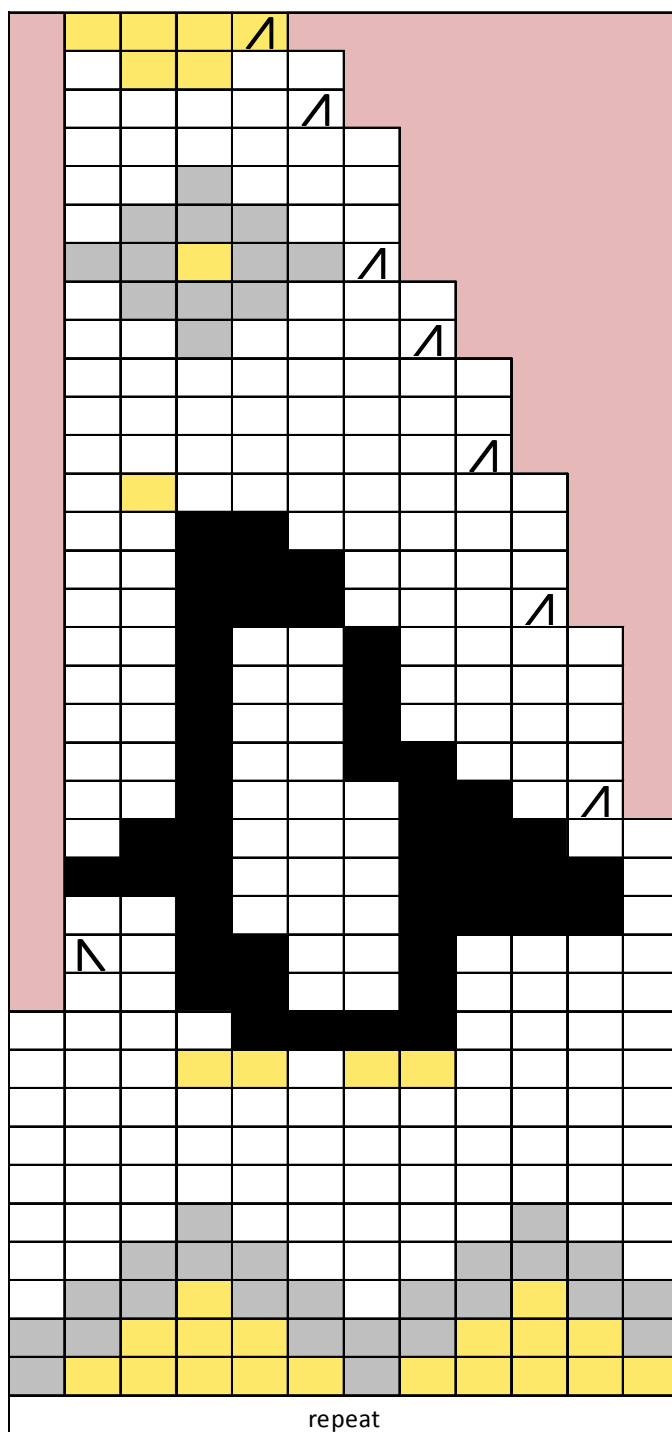
### Chart 1



### Key

-  = A - 1411
-  = B - 0056
-  = C - 0051
-  = D - 0059
-  = K 2tog
-  = K2tog tbl
-  = No sts

**Chart 2**



- 36** 60 ( 64 68 72 80 ) sts
- 35
- 34** 75 ( 80 85 90 100 ) sts
- 33 Skip rnd sizes 2, 4, 6 og 8
- 32
- 31
- 30** 90 ( 96 102 108 120 ) sts
- 29
- 28** 105 ( 112 119 126 140 ) sts
- 27 Skip rnd sizes 2, 4
- 26
- 25** 120 ( 128 136 144 160 ) sts
- 24
- 23
- 22
- 21** 135 ( 144 153 162 180 ) sts
- 20
- 19 Skip rnd sizes 2, 4, 6
- 18
- 17
- 16** 150 ( 160 170 180 200 ) sts
- 15
- 14
- 13
- 12** 165 ( 176 187 198 220 ) sts
- 11 Skip rnd sizes 2, 4, 6
- 10
- 9
- 8 Skip rnd sizes 2, 4
- 7 Skip rnd size 2
- 6 Skip rnd size 2
- 5
- 4
- 3
- 2
- 1** 180 ( 192 204 216 240 ) sts