

92-04



PURE NEW WOOL



*Icelandic Textiles Ltd.*

P.O. Box 140 • 270 Mosfellsbæ • Iceland  
Telephone 354-1-666300 • Telefax 354-1-667330



5.5 - 6.5 mm

UK 5 - 7

USA 9 - 10.5

Álafoss  
Lopi<sup>®</sup>

## HIS AND HER SWEATER AND CARDIGAN

Pattern: Guðrún Sveinsdóttir

Colours: Guðrún Gunnarsdóttir

### MATERIALS

	Green	Grey	Red
M	9305	0058	9302
A	9303	0056	9308
B	9304	0051	9207
C	9306	9241	9214

ÁLAFOSS LOPI® - 100 g balls

SIZES XS S M L XL

SWEATER	XS	S	M	L	XL
M	5	5	6	6	7
A	3	3	3	3	3
B	1	1	1	1	1
C	1	1	1	1	1

### CARDIGAN

M	5	6	7	7	8
A	1	1	1	2	2
B	1	1	1	1	1
C	1	1	1	1	1

Buttons: 8 - 10 (cardigan)

1 pair each 4.5 mm and 6 mm needles.

4.5 mm twin pin (sweater).

6 mm twin pin.

Stitch holders.

4.5 mm crochet hook (cardigan)

(U.K. size 7 / U.S.A. size G).

### NEEDLE SIZES

U.K. and Canada	3	4	5	6	7
Metric	6.5	6	5.5	5	4.5
U.S.A.	10.5	10	9	8	7

### TENSION

13 stitches and 18 rows = 10 cm square on 6 mm needles over stocking stitch. Please check your tension and if you have too many stitches change to a larger size needle, or if you have too few stitches change to a smaller size.

### GLOSSARY FOR U.S.A.

**tension** = gauge; **cast off** = bind off;

**stocking stitch** = stockinette stitch;

**twin pin** = circular needle;

**double crochet** = single crochet.

### ABBREVIATIONS

**k** = knit; **p** = purl; **st(s)** = stitch(es); **inc** = increase by knitting into the front and back of next st; **dec** = 2tog = work next 2 sts together; **beg** = beginning; **fol** = following; **cont** = continue; **s1** = slip next st; **\*\*** = repeat instructions between asterisks number of times indicated; **rep** = repeat; **stocking stitch** = Row 1: knit, Row 2: purl; **twisted rib** = Knitted flat (on odd number of sts) : Row 1: \* "k1, p1" to last st, "k1 ("k = k into back of st), Row 2: \* p", k1" to last st, p"1 (**p**" = s1 knitwise, slip st back onto left-hand needle and p it). Knitted

round: Row 1: \* "k1, p1", Row 2: \* k"1, p1" (**k**" = s1 knitwise, slip st back onto left-hand needle and k it); **dc** = double crochet; **ch** = chain.

### SWEATER

#### MEASUREMENTS cm (ins)

	XS	S	M	L	XL
Finished measurement:	98 (39)	105 (41)	111 (44)	117 (46)	123 (48)
Length to shoulder:	66 (26)	67 (26)	68 (27)	70 (28)	72 (28)
Sleeve length:	45 (18)	46 (18)	47 (18)	48 (19)	50 (20)

#### BACK AND FRONT (alike)

Using 4.5 mm needles and A cast on 59(63:65:69:73)sts and work 6(6:6:7:7)cm in twisted rib (see ABBREVIATIONS), ending with a wrong side row and increasing 6(6:8:8:8)sts evenly over last row.

65(69:73:77:81)sts

Change to 6 mm needles and stocking stitch.

#### Work Chart 1

Row 1 \*1B 1A\* to last st, 1B

Row 2 B

Row 3 C

Row 4 \*2M 1A 1M\* to last st, 1M

Row 5 \*1M 3A\* to last st, 1M

Row 6 as row 4

Row 7 as row 3

Row 8 as row 2

Row 9 as row 1

Change to M and cont in stocking stitch until work measures 42(42:43:43:45)cm, ending with a knit row.

Next row: Cast off 4(5:5:5:4)sts, p56(59:63:67:72), cast off 5(5:5:5:5)sts.

Break yarn. Leave on holder for yoke.

#### SLEEVES

Using 4.5 mm needles and A cast on 31(31:31:33:33)sts and work 6(6:6:7:7)cm in twisted rib, ending with a wrong side row and increasing 14(14:18:16:16)sts evenly over last row.

45(45:49:49:49)sts

Change to 6 mm needles and stocking stitch. **Work Chart 1** as on back and front. Work 1 row M. Cont using M, inc each end next and every foll 7th row 5(6:5:5:5) times to 57(59:61:61:61)sts. Cont without shaping until work measures 45(46:47:48:50)cm (or required length), ending with a purl row. Cast off 4(5:5:6:5)sts and 4(5:5:5:5)sts beg next 2 rows. Break yarn on sleeve 1 only. Leave on holder for yoke.

#### YOKE

Using 6 mm twin pin and M k49(49:51:50:51) across sleeve 2, k56(59:63:67:72) across front, k49(49:51:50:51) across sleeve 1, k56(59:63:67:72) across back.

210(216:228:234:246)sts

Join into a circle. Make a slip knot in a short length of contrasting yarn and place on right-hand needle to mark beginning of

round. Work in stocking stitch (every round knit) and slipping marker from one needle to the other on every round, continue as follows:

#### Work Chart 3a

Round 1 \*3M 1B 2M\*

Round 2 \*2M 3B 1M\*

Round 3 \*1M 5B\*

Round 4 \*3B 1C 2B\*

Round 5 \*2B 3C 1B\*

Round 6 \*1B 5C\*

Round 7 \*3C 1A 2C\*

Round 8 \*2C 3A 1C\*

Round 9 \*1C 5A\*

Round 10 \*3A 1M 2A\*

Round 11 \*2A 3M 1A\*

Round 12 \*1A 5M\*

Round 13 \*2M 1C 2M\*

Round 14 \*2M 1C 1M 1C 1M\*

Round 15 \*1M 1C 1M 1C 1M 1C\*

Round 16 \*2B 3C 1B\*

Round 17 \*2B 1C 2togC 1B\*

175(180:190:195:205)sts

Round 18 B

Round 19 \*1A 4B\*

Round 20 \*2A 2togA 1A\*

140(144:152:156:164)sts

Round 21 \*1M 3A\*

Round 22 M

Rep Round 22 0(1:1:1:1)times

Round 23 C, dec 5(4:2:1:4)sts evenly over Round 23

135(140:150:155:160)sts

Round 24 2C \*1A 1C 2togC 1C\* to last 3sts (and 1st of next round), 1A 1C 2togC

108(112:120:124:128)sts

Round 25 1A \*2A 1C 1A\* to last 3sts, 2A 1C

Rounds 26-29 1M \*1A 3M\* to last 3sts, 1A 2M

Rep Round 29 0(1:1:2:2)times

Round 30 1M \*1A 1M 2togM\* to last 3sts (and 1st of next round), 1A 1M 2togM

81(84:90:93:96)sts

Round 31 \*1A 2M\* to last 2sts, 1A 1M

Rounds 32-34 1M \*1A 2M\* to last 2sts, 1A 1M

Rep Round 34 0(0:1:2:3)times

Change to 4.5mm twin pin.

Round 35 1A \*1A 2togA\* to last 2sts (and 1st of next round), 1A 2togA

54(56:60:62:64)sts

Work in rounds of twisted rib, 7(7:7:7:7)cm. Cast off in rib

#### MAKING UP

Fold neckband in half to inside and slip stitch into position. Join sleeve and side seams. Join underarm seams. Weave in any loose ends.

#### CARE INSTRUCTIONS

See ball band.

## CARDIGAN - GREY

### MEASUREMENTS

As given for SWEATER.

### BACK AND FRONT

#### Knitted in one piece

Using 4.5 mm needles and M cast on 117(123:131:137:145)sts and work 6(6:6:7:7)cm in twisted rib (see ABBREVIATIONS) ending with a wrong side row and increasing 12(14:14:16:16)sts evenly over last row

129(137:145:153:161)sts

Change to 6 mm needles and stocking stitch.

#### Work Chart 1.

Change to M and cont in stocking stitch until work measures 42(42:43:43:45)cm, ending with a knit row.

Next row: p28(30:32:33:35), cast off 8(9:9:10:9)sts, p57(59:63:67:73), cast off 8(9:9:10:9)sts, p28(30:32:33:35). DO NOT BREAK YARN. Leave on holder for yoke.

### SLEEVES

Using M work twisted rib. Cont as for SWEATER until cast-off. Cont as follows: Cast off 4(5:5:5:4)sts and 4(5:5:5:5)sts beg next 2 rows. Leave on holder for yoke.

### YOKE

Using 6 mm twin pin and M k28(30:32:33:35) across right front, k49(49:51:51:52) across sleeve 1, k57(59:63:67:73) across back, k49(49:51:51:52) across sleeve 2, k28(30:32:33:35) across left front.

211:217:229:235:247 sts

#### Work Chart 3b

Row 1 \*3M 1B 2M\* to last st, 1M  
Row 2 \*2M 3B 1M\* to last st, 1M  
Row 3 \*1M 5B\* to last st, 1M  
Row 4 \*3B 1C 2B\* to last st, 1B  
Row 5 \*2B 3C 1B\* to last st, 1B  
Row 6 \*1B 5C\* to last st, 1B  
Row 7 \*3C 1A 2C\* to last st, 1C  
Row 8 \*2C 3A 1C\* to last st, 1C  
Row 9 \*1C 5A\* to last st, 1C  
Row 10 \*3A 1M 2A\* to last st, 1A  
Row 11 \*2A 3M 1A\* to last st, 1A  
Row 12 \*1A 5M\* to last st, 1A  
Row 13 \*3M 1C 2M\* to last st, 1M  
Row 14 \*2M 1C 1M 1C 1M\* to last st, 1M  
Row 15 \*1M 1C 1M 1C 1M 1C\* to last st, 1M  
Row 16 \*2B 3C 1B\* to last st, 1B  
Row 17 \*2B 1C 2togC 1B\* to last st, 1B  
176(181:191:196:206)sts  
Row 18 B  
Row 19 \*1A 4B\* to last st, 1A  
Row 20 \*2A 2togA 1A\* to last st, 1A  
141(145:153:157:165)sts  
Row 21 \*1M 3A\* to last st, 1M  
Row 22 M  
Rep Row 22 0(1:1:1:1)time  
Row 23 C, dec 6(5:3:2:5)sts evenly over  
Row 23  
135(140:150:155:160)sts  
Row 24 2C \*1A 1C 2togC 1C\* to last

3sts, 1A 2C

109(113:121:125:129)sts

Row 25 1C 1A \*2A 1C 1A\* to last 3 sts, 2A 1C

Rows 26-29 2M \*1A 3M\* to last 3 sts, 1A 2M  
Rep Row 29 0(1:1:2:2)times

Row 30 2M \*1A 1M 2togM\* to last 3 sts, 1A 2M

83(86:92:95:98)sts

Rows 31-34 2M \*1A 2M\* to last 3 sts, 1A 2M

Rep Row 34 0(0:1:2:3)times

Row 35 2A \*1A 2togA\* to last 3 sts, 3A  
57(59:63:65:67)sts

#### Work Chart 4

Row 1 B, dec 4(2:2:4:2)sts evenly over  
Row 1

53(57:61:61:65)sts

Row 2 C

Row 3 \*2M 1A 1M\* to last st, 1M

Row 4 \*1M 3A\* to last st, 1M

Row 5 as row 3

Row 6 as row 2

Row 7 as row 1

Row 8 A

Row 9 M

Next row: Purl M on right side. Work 8 rows in stocking stitch. Cast off.  
(Picot hem: See CARDIGAN - RED)

### MAKING UP

Fold neckband in half to inside and slip stitch into position. Join sleeve seams. Join underarm seams. Weave in any loose ends.

### BUTTON BAND

#### Left front women, right front men

Using 4.5 mm crochet hook and M work 5 rows dc along front edge, going through both thicknesses of neckband.

### BUTTONHOLE BAND

#### Right front women, left front men

Mark places for 8-10 buttons evenly spaced along button band having top button at center of neckband and bottom button 2 cm above lower edge. Using M work 2 rows dc.

Next row: \*dc to opposite marker, work 1ch over 1dc\* 8 -10 times, dc to end.

Work 2 rows dc. (Sew on buttons).

### CARE INSTRUCTIONS

See ball band.

## CARDIGAN - RED

### MEASUREMENTS cm (ins)

	XS	S	M	L	XL
Finished measurement:	97	106	111	115	120
Length to shoulder:	66	67	68	70	72
Sleeve length:	45	46	47	48	50
	(18)	(18)	(18)	(19)	(20)

### BACK AND FRONT

#### Knitted in one piece

Using 4.5 mm needles and M cast on

115(125:131:137:141)sts and work 6(6:6:7:7)cm in twisted rib (see ABBREVIATIONS) ending with a wrong side row and increasing 12(14:14:16:16)sts evenly over last row

127(139:145:151:157)sts

Change to 6 mm needles and stocking stitch

#### Work Chart 2

Row 1 \*3M 1B 2M\* to last st, 1M

Row 2 \*2M 3B 1M\* to last st, 1M

Row 3 \*1M 5B\* to last st, 1M

Row 4 \*3B 1C 2B\* to last st, 1B

Row 5 \*2B 3C 1B\* to last st, 1B

Row 6 \*1B 5C\* to last st, 1B

Row 7 \*3C 1A 2C\* to last st, 1C

Row 8 \*2C 3A 1C\* to last st, 1C

Row 9 \*1C 5A\* to last st, 1C

Row 10 \*3A 1M 2A\* to last st, 1A

Row 11 \*2A 3M 1A\* to last st, 1A

Row 12 \*1A 5M\* to last st, 1A

Change to M and cont in stocking stitch until work measures 42(42:43:43:45)cm, ending with a knit row.

Next row: p28(30:32:33:35), cast off 8(10:9:9:8)sts, p55(59:63:67:71), cast off 8(10:9:9:8)sts, p28(30:32:33:35). DO NOT BREAK YARN. Leave on holder for yoke.

### SLEEVES

Using 4.5 mm needles and M cast on 31(31:31:33:33)sts and work 6(6:6:7:7)cm in twisted rib, ending with a wrong side row and increasing 12(12:18:16:16)sts evenly over last row.

43(43:49:49:49)sts

Change to 6 mm needles and stocking stitch. **Work Chart 2** as on back and front. Work 1 row M. Cont using M, inc each end next and every foll 7th row 7(7:5:5:5) times to 59(59:61:61:61)sts. Cont without shaping until work measures 45(46:47:48:50)cm (or required length), ending with a purl row. Cast off 4(5:5:5:4)sts and 5(5:5:5:4)sts beg next 2 rows. Leave on holder for yoke.

### YOKE

Using 6 mm twin pin and M k28(30:32:33:35) across right front, k50(49:51:51:53) across sleeve 1, k55(59:63:67:71) across back, k50(49:51:51:53) across sleeve 2, k28(30:32:33:35) across left front.

211(217:229:235:247) sts

**Work Chart 3b** and **Chart 4** as for CARDIGAN - GREY.

Next row (right side): Using M k1 \*yf k2tog\*. Work 8 rows in stocking stitch. Cast off.

(Plain hem: See CARDIGAN - GREY)

### MAKING UP and FRONT BANDS

As given for CARDIGAN - GREY.

### CARE INSTRUCTIONS

See ball band.

CHART 1

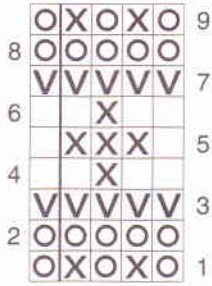


CHART 2

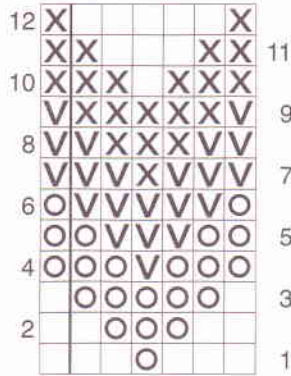


CHART 4

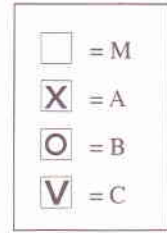
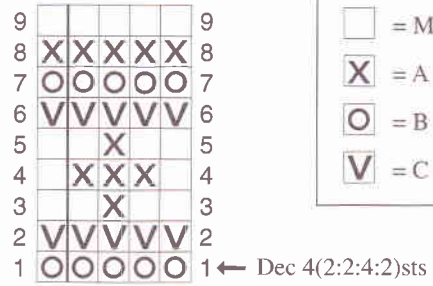


CHART 3 a-b

