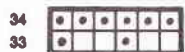
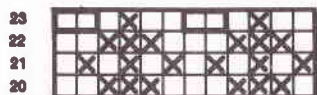
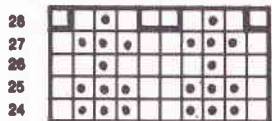
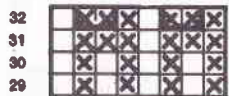


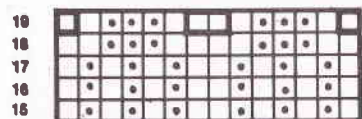
**PATTERN II**



← Repeat this round  
0—0—0—1—2—2 times.



← Repeat this round  
0—0—1—1—1—2 times.



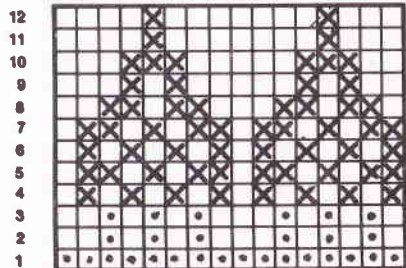
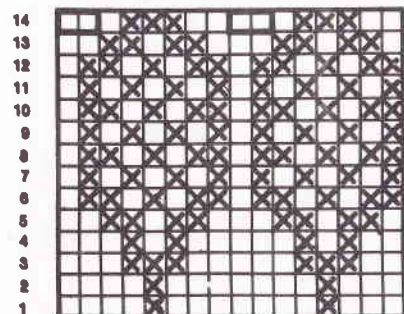
□ = basic colour, white/light brown

◻ = black/white

⊠ = brown/black

◻◻ = work 2 sts together

**PATTERN I**



Design: Jóhanna Hjaltadóttir

All rights reserved

**KNITTING NEEDLE SUGGESTED EQUIVALENT CHART**

Canadian & British Knitting Needles	1	2	3	4	5	6	7	8	9	10	11
*Metric Knitting Needles mm	7½	7	6½	6	5½	5	4½	4	3¾	3¼	3
American Knitting Needles			10½	10	9	8	7	6	5	3	

\*used in this pattern

**Samband**  
*Lopi*



Pure New  
**ICELANDIC** Wool

**SIZES:****MEASUREMENTS:** 1/2 of bust width.

Length

**MATERIALS: SAMBAND LOPI**

Natural white no. 1 or Light brown no. 7  
 Natural brown no. 6 Natural black no. 5  
 Natural black no. 5 Natural white no. 1

Circular needle no. 4, 70 cm long. Circular needles no. 6, 40 and 70 cm long. Doublepointed needles no. 4. Crochet hook no. 4.

**TENSION:** 7 sts to 5 cm over st st worked on no. 6 n.

Knit a tension sample to check your tension and choose size of needles accordingly. If the tension is incorrect, the garment will not have the right dimensions.

To make the jacquard pattern easier to work both pullover and cardigan are knitted in rounds on a circular needle. The cardigan being cut up center front afterward. It can also be knitted back and forth (1 rd K, 1 rd P, otherwise follow instructions).

	Ladies' Men's	S	M	L	XL	XL
		S	M	L	M	L
		44	46	48	50	52
		64	66	69	71	73
		500	500	600	600	700
		200	200	200	200	200
		100	100	100	100	100
						700 g
						200 g
						100 g
<b>PULLOVER:</b> Using nat. white (nat. black) and long circ. n no. 4 cast on	112	120	126	134	134	140 sts
Work around in K 1, P 1, rib	5	5	6	6	6	6 cm
Next rd: Change to no. 6 n and st st, inc evenly	8	8	10	10	10	12 sts
Work patt I then main col. till work measures	42	44	46	48	49	50 cm
Next rd: Slip on holder in each side	9	9	10	10	10	11 sts
for armholes. Remaining sts for back and front parts, each	51	55	58	62	62	65 sts
Now work sleeves.						
<b>CARDIGAN:</b> Using nat. white (nat. black) and long circ. n no. 4 cast on	112	120	126	134	134	140 sts
Work back and forth in K 1, P 1, rib	5	5	6	6	6	6 cm
Cast on 2 extra sts, to be purled throughout for center front (not counted in pattern). Now work around as for pullover. After shaping of armholes there are	25	27	29	31	31	32 sts
on each front parts and on back part	52	56	58	62	62	66 sts
<b>SLEEVES:</b> Using dp n no. 4 and nat. white (nat. black) cast on	32	32	32	38	38	38 sts
Work around in K 1, P 1, rib	6	6	6	7	7	7 cm
Next rd: Change to n no. 6 and st st, inc evenly	8	8	8	10	10	10 sts
Work patt I, then main col. Add 2 sts under arm	5	5	6	2	4	5 times
at even intervals. When sleeve measures	45	47	49	51	53	53 cm
Armholes: slip on holder under arm	9	9	10	10	10	11 sts
When both sleeves are completed, work yoke.						
<b>YOKE:</b> Using main col. place sleeves, front and back on long n no. 6, a total of work	184	192	200	208	216	224 sts
Work patt II with dec as shown	34	34	35	36	37	38 rds
Next rd: dec evenly to	52	52	54	56	58	58 sts
Using n no. 4, work in K 1, P 1 rib	10	10	10	10	10	10 cm
Cast off loosely.						

**TO MAKE UP:** Check all loose ends. Weave together sts under arms. Fold neckband in half to WS and catch lightly in place. **Cardigan:** Sew 2 seams in the machine in each of the 2 P sts center front, cut in the middle. Fold neckband in half to WS and catch light in place. **Edging: 1st row:** Using crochet hook no. 4 and main col. work 1 row of dc — 1 dc in every st on edge (over seam, close to next K st). **2nd row:** Work dc into every dc of previous row (skip 1 dc 6—8 times),

make 7—8 buttonholes by at even intervals making 2 ch over 2 dc of previous row. **3rd row:** As 2nd row work twice into every buttonhole. **4th row** Use another col. Steam lightly.

**Abbreviations:** ch: chain, dc: double crechet, dec: decrease, dp: double pointed, inc: increase, K: knit, n: needle, patt: pattern, P: purl, rd: round, sts: stitches, st st: stocking stitch, WS: wrong side, RS: right side, nat: natural.