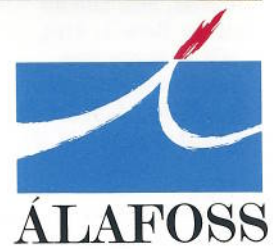


A-837 *Álafoss Lopi*



A837

A traditional Icelandic design

Presentation and pattern:
Christian de Falbe

SIZES ins (cm)

To fit bust	32-34 (81-86)	35-37 (89-94)
Actual size	37 (94)	40 (102)
Back length	25 (63)	26 (66)
Sleeve seam	17 (43)	17 (43)
To fit bust	38-40 (97-102)	41-43 (104-109)
Actual size	43 (109)	46 (117)
Back length	27 (69)	28 (71)
Sleeve seam	19 (48)	19 (48)

MATERIALS

Lopi 100g balls
 M 53 6 6 7 7
 A 51 2 2 2 2
 B 52 1 1 1 1
 1 pair each 5.5mm and 6.5mm needles.
 6.5mm twin pin. 9 buttons.

TENSION

13½ stitches and 18 rows = 10cm square on 6.5mm needles over stocking stitch. Please check your tension and if you have too many stitches change to a larger size needle, or if you have too few stitches change to a smaller size.

GLOSSARY FOR U.S.A.

tension = gauge; **cast off** = bind off;
stocking stitch = stockinette stitch;
moss stitch = seed stitch;
twin pin = circular needle.

NEEDLE SIZES

U.K. and Canada	2	3	4	5	6	7
Metric	7	6.5	6	5.5	5	4.5
U.S.A.	10.5	10	9	8	7	6

ABBREVIATIONS

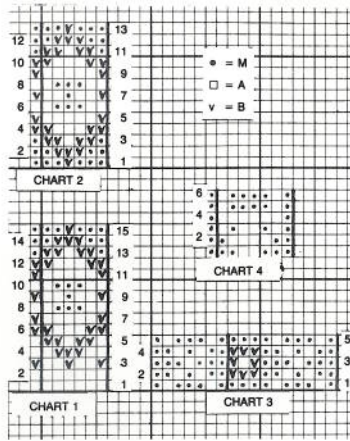
k = knit; **p** = purl; **st(s)** = stitch(es);
inc = increase by knitting into the front and back of next st; **dec** = k2tog = knit next 2 sts tog = together; **beg** = beginning; **patt** = pattern; **alt** = alternate; **foll** = following; **cont** = continue; **rem** = remaining; **cn** = cable needle; **yrn** yarn round needle; **yf** = yarn forward; **yb** = yarn back; **s1** = slip next st; **psso** = pass slipped st over; * * = repeat instructions between asterisks number of times indicated, also shown as []; **stocking stitch** = Row 1: knit, Row 2: purl; **k1 p1 rib** = every row *k1 p1* to end on even number of sts, or Row 1: *k1 p1* to last st, k1, Row 2: k1 *k1 p1* to end on odd number of sts;

BACK AND FRONT

Knitted in one piece

Using 5.5mm needles and A cast on 109 (121:133:145)sts and work 5 (5:6:6)cm in k1 p1 rib.

Inc row rib 4 (5:5:6) *inc, rib 8 (9:10:11)* eleven times, inc, rib 5 (5:6:6) 121 (133:145:157)sts



Change to 6.5mm needles stocking stitch and **work Chart 1**

Rows 1-2 A
 Row 3 *1B 2A* to last st, 1A
 Row 4 *2A 3B 1A* to last st, 1A
 Row 5 *1A 2B* to last st, 1A
 Row 6 *2B 3A 1B* to last st, 1B
 Row 7 *1B 5A* to last st, 1B
 Row 8 *2A 3M 1A* to last st, 1A
 Row 9 *1B 2A 1M 2A* to last st, 1B
 Row 10 as row 8
 Row 11 as row 7
 Row 12 as row 6
 Row 13 *1M 2B 1A 2B* to last st, 1M
 Row 14 *2M 3B 1M* to last st, 1M
 Row 15 *3M 1B 2M* to last st, 1M

Change to M and cont in stocking stitch until work measures 41cms ending with a knit row.

Next row: p25 (28:30:33), cast off 10 (10:12:12)sts, p51 (57:61:67), cast off 10 (10:12:12)sts, p25 (28:30:33). DO NOT BREAK YARN. Leave on holder for yoke.

SLEEVES

Using 5.5mm needles and A cast on 33 (33:37:37)sts and work 5 (5:6:6)cm in k1 p1 rib.

Inc row rib 2 *inc, rib 2* nine (nine: eleven: eleven) times, inc, rib 3 (3:1:1) 43 (43:49:49)sts

Change to 6.5mm needles, stocking stitch and **work Chart 1** as on back, increasing each end of rows 6 and 12. Change to M and cont in stocking stitch, increasing each end of every 6th row to 53 (57:61:61)sts. Cont without shaping until work measures 43 (43:48:48)cms. Cast off 5 (5:6:6)sts beg next 2 rows. BREAK YARN. Leave on holder for yoke.

YOKE

Using 6.5mm twin pin and M k25 (28:30:33) across right front.

Size 1 k43 across sleeve 1, k51 across back and k43 across sleeve 2.

Sizes 2 (3:4) k22 (23:23), k2tog, k23 (24:24) across sleeve 1, k57 (61:67) across back, k22 (23:23), k2tog, k23 (24:24) across sleeve 2.

All sizes k25 (28:30:33) across left front. 187 (205:217:229)sts

Work 3 rows stocking stitch.

Work Chart 2

Row 1 *3M 1B 2M* to last st, 1M
 Row 2 *2M 3B 1M* to last st, 1M
 Row 3 *1M 2B 1A 2B* to last st, 1M
 Row 4 *2B 3A 1B* to last st, 1B
 Row 5 *1B 5A* to last st, 1B
 Row 6 *2A 3M 1A* to last st, 1A
 Row 7 *1B 2A 1M 2A* to last st, 1B

Row 8 as row 6
 Row 9 as row 5
 Row 10 as row 4
 Row 11 as row 3
 Row 12 as row 2
 Row 13 as row 1

Work 3 rows stocking stitch using M.
 Next row *k2 k2tog k2* to last st, k1 156 (171:181:191)sts
 Next row size 1 purl to last 2sts inc 157sts

Sizes 2 (3:4) p24 (29:34) *p2tog p38* three times, p2tog p25 (30:35) 167 (177:187)sts

Work 0 (0:2:2) rows stocking stitch

Work Chart 3

Row 1 *1M 1A 3M 1A 4M* to last 7sts, 1M 1A 3M 1A 1M
 Row 2 *2M 1A 1M 1A 2M 3B* to last 7sts, 2M 1A 1M 1A 2M
 Row 3 *3M 1A 3M 1B 1A 1B* to last 7sts, 3M 1A 3M
 Row 4 as row 2
 Row 5 as row 1

Work 3 rows stocking stitch using M
 Next row sizes 1 (2) k7 (2) *dec, k3* to end 127 (134)sts

Sizes 3 (4) *dec, k3* to last 2sts, dec 141 (149)sts

Next row sizes 1 (2:3) purl

Size 4 p73 p2tog p74 148sts

Work 0 (0:2:2) rows stocking stitch

Work Chart 4

Row 1 *3M 2A 2M* to last st, 1M
 Row 2 *2M 4A 1M* to last st, 1M
 Row 3 *1M 1A 1M 2A 1M 1A* to last st, 1M
 Row 4 *1M 6A* to last st, 1M
 Rows 5-6 *1M 1A 4M 1A* to last st, 1M

Work 2 (2:4:4) rows stocking stitch using M

Next row k3 *dec, k5* to last 5sts, dec, k4 109 (115:121:127)sts

Next row purl, then work as folls:

Row 1 2A *3B 3A* to last 5sts, 3B 2A
 Row 2 2B *1A p2togA 1B p2togB* to last 5sts 1A p2togA 2B 74 (78:82:86)sts

Row 3 knit M

Row 4 ps *p2tog p2* to end
 Change to 5.5mm needles and work 6 rows k1 p1 rib. Cast off in rib.

BUTTONBAND

Left front women, right front men
 Using 5.5mm needles and M pick up and knit 109 (113:117:121)sts including neckband and work 4 rows k1 p1 rib. Change to A and work 1 row rib. Cast off in rib.

BUTTONHOLE BAND

Right front women, left front men
 Pick up as for buttonband.
 Work 2 rows k1 p1 rib.
 Row 3 rib 2 (4:2:4) *yrn, dec, rib 11 (11:12:12)* eight times, yrn, dec, rib 1 (3:1:3).
 Row 4 work in rib.
 Change to A and work 1 row in rib.
 Cast off in rib.

MAKING UP

Join sleeve seams. Join underarm seam. Weave in any loose ends. Sew on buttons.

CARE INSTRUCTIONS

See ball band.